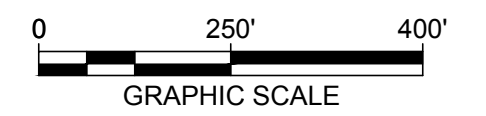
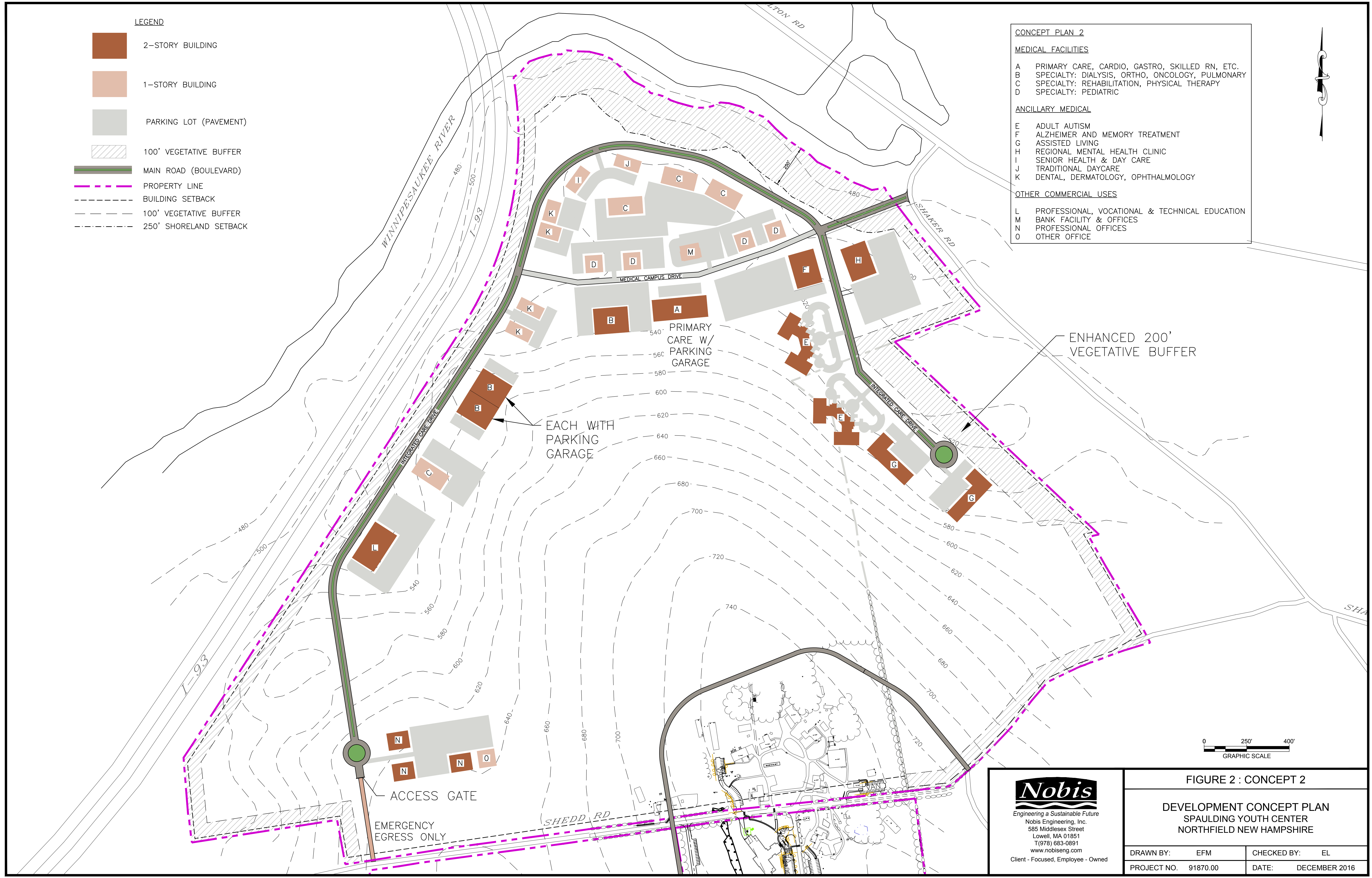
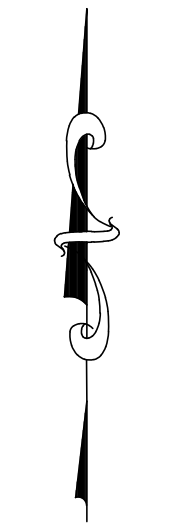


- LEGEND**
- 2-STORY BUILDING
 - 1-STORY BUILDING
 - PARKING LOT (PAVEMENT)
 - 100' VEGETATIVE BUFFER
 - MAIN ROAD (BOULEVARD)
 - PROPERTY LINE
 - BUILDING SETBACK
 - 100' VEGETATIVE BUFFER
 - 250' SHORELAND SETBACK

- CONCEPT PLAN 2**
- MEDICAL FACILITIES**
- A PRIMARY CARE, CARDIO, GASTRO, SKILLED RN, ETC.
 - B SPECIALTY: DIALYSIS, ORTHO, ONCOLOGY, PULMONARY
 - C SPECIALTY: REHABILITATION, PHYSICAL THERAPY
 - D SPECIALTY: PEDIATRIC
- ANCILLARY MEDICAL**
- E ADULT AUTISM
 - F ALZHEIMER AND MEMORY TREATMENT
 - G ASSISTED LIVING
 - H REGIONAL MENTAL HEALTH CLINIC
 - I SENIOR HEALTH & DAY CARE
 - J TRADITIONAL DAYCARE
 - K DENTAL, DERMATOLOGY, OPHTHALMOLOGY
- OTHER COMMERCIAL USES**
- L PROFESSIONAL, VOCATIONAL & TECHNICAL EDUCATION
 - M BANK FACILITY & OFFICES
 - N PROFESSIONAL OFFICES
 - O OTHER OFFICE



Nobis
 Engineering a Sustainable Future
 Nobis Engineering, Inc.
 585 Middlesex Street
 Lowell, MA 01851
 T(978) 683-0891
 www.nobiseng.com
 Client - Focused, Employee - Owned

FIGURE 2 : CONCEPT 2	
DEVELOPMENT CONCEPT PLAN SPAULDING YOUTH CENTER NORTHFIELD NEW HAMPSHIRE	
DRAWN BY: EFM	CHECKED BY: EL
PROJECT NO. 91870.00	DATE: DECEMBER 2016

J:\91870.00 - Adult Housing, Spaulding Youth Center, N:\CADD\91870.00-CONCEPT PLAN 2.dwg 6/18/2014 3:50 PM